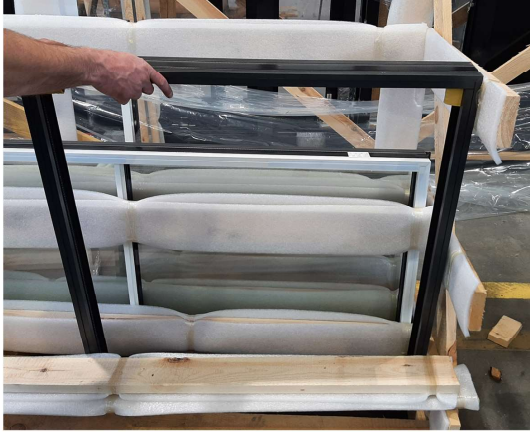




hansen
products

Installation instruction for the Millennium without glass

1. Take out the frame and glass from the pallet.



Prepare necessary tools and accessories:



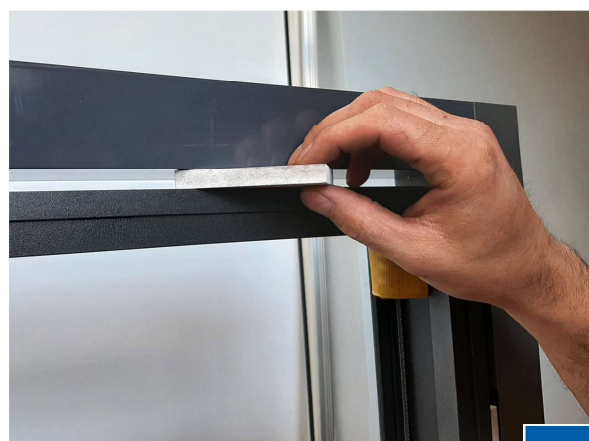
2. Window installation:

2.1. Insert the frame into the opening.



2.2. Disassemble glazing beads.

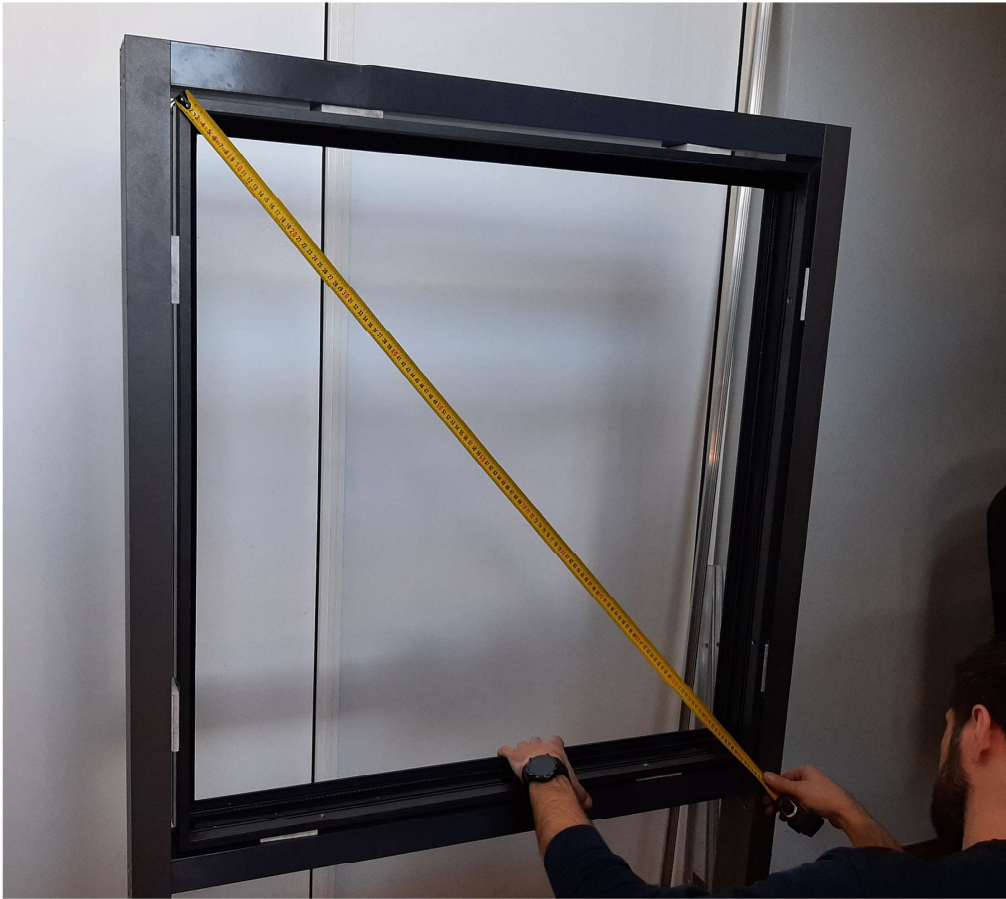
Pre-set the frame and block it by wedges and mounting spacers in the places of mounting holes. Adjust by wedges and make sure that frame is level in all directions.



2.3. By using spirit level check the vertical and horizontal correctness.



2.4. Check whether the diagonals of the frame are the same - as they should be.



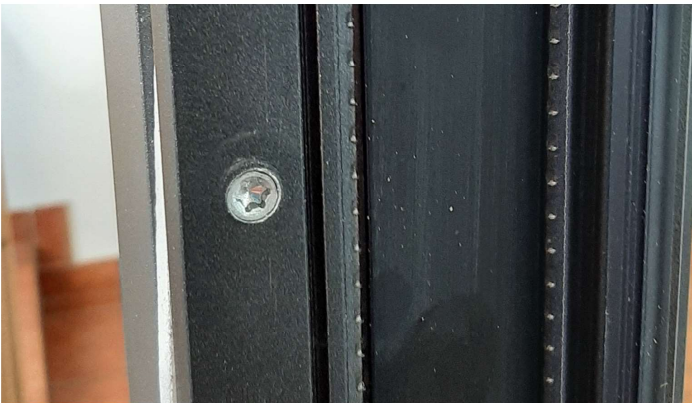
2.5. Drill mounting holes in the wall through the frame.
The numbers of mounting holes is consistent with the number of holes in frame.



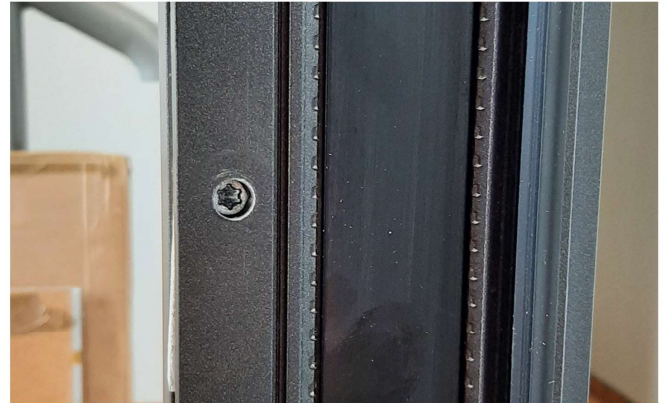
2.6. Install mounting screws. Number of screws corresponds to the number of holes in frame.



Correctly screw the screw.



Inorrectly screw the screw.



2.7 Clean the frame.



3. Glass installation:

3.1. Install steel glass carrier 100 mm from edge of frame to the axis of steel glass carrier.

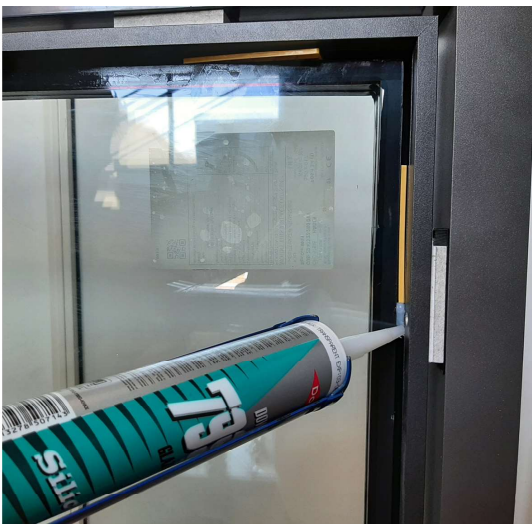
3.2. Put a plastic glass supports on steel glass carrier.



3.3. Place a glass into the frame.

3.4. Install plastic support around the glass.

3.5. Glue the plastic supports with silicone.



4. Install horizontal glazing beads first, then vertical ones.

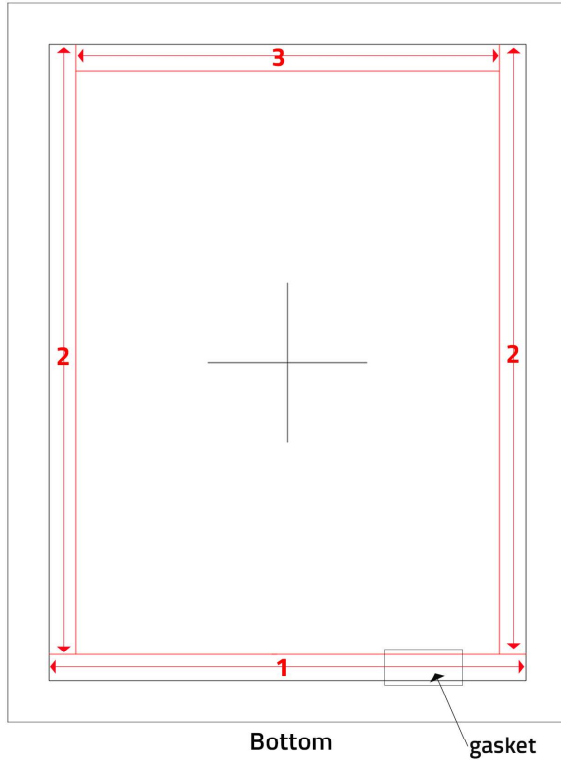


5. Install wedge gasket.

All gaskets must be cut with a 10% surplus.

Sequence of installation:

1. Install bottom horizontal gasket.
2. Install vertical gaskets on both sides.
3. Install top horizontal gasket.





* Manual of removing of glazing beads

Prepare necessary tools:

